



Precision Air Drilling Services

Equipment Information & Specifications





ESD Station Specifications

Table of Contents

ESD Station Specifications..... 2

Skid Specifications:..... 2

Dimensions & Weight: 2

Skid Specifications:

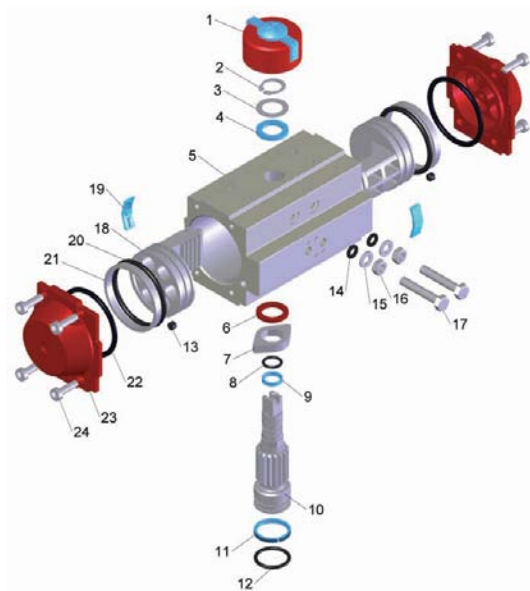
Item Description:	Item Specification:
Inlet Size	3" Schedule 80 Seamless
Outlet Size	3" Schedule 80 Seamless
Pneumatic Actuator Valve	2" 3-way scheduled 80 Trunnion valve
Pneumatic Actuator Valve	1 - 3/4 3-way floating valve
Pneumatic Actuator Valve	1 - 110V shutdown switch
Fitting Box:	2' L X 18" W X 18" H

Dimensions & Weight:

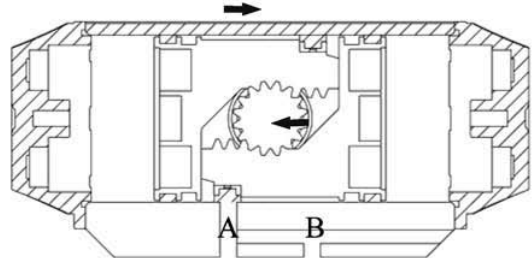
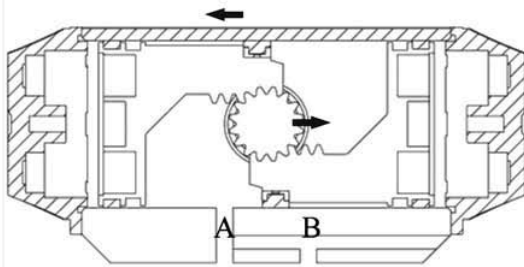
Item Description:	Item Specification:
Size:	36" W, 5' L X, approx, 4' H
Weight:	Approximately 2,500 lbs



Double Acting Exploded View



<p>CCW Air to Port A forces the pistons outwards, causing the pinion to turn counter-clockwise while air is being exhausted from Port B.</p>	<p>CW Air to Port B forces the pistons inwards, causing the pinion to turn clockwise while air is being exhausted from Port A.</p>
---	---





- Available in stainless steel or carbon steel
- Body & end cap are investment cast
- Adjusting stem packing
- Stem trunnion type design
- 100% air tested under water at 80-100 psi
- Working pressure : 3000Psi (maz)
- Iso 5211 mounting pad
- End cap type : threaded, socket weld, butt weld.
- Valve construct and end thickness meet ANSI B16.34

NO.	NAME OF PARTS	MATERIALS
1	BODY	CF3M
2	BUTT WELD ENDS	CF3M
3	BALL HOUSING	PEEK
4	GASKET	GRAPHITE/TFM4215
5	BALL SEATS	PEEK/Delrin
6	TRUNNION BALL	SS 316L
7	BONNET GASKET	GRAPHITE/TFM4215
8	STEM HOUSING	PEEK
9	BONNET	CF3M
10	STEM PACKING	GRAPHITE
11	GLAND	CF8
12	STOP PIN	SS 304
13	HANDLE	SS 304
14	STEM NUT	SS 304
15	END CAP BOLTS	SS 304
16	COVER	PLASTISOL
17	BONNET BOLTS	SS 304
18	BLANK END	CF3M

SIZE	A	B	C	D		D1	E	F	G	L	P
				80#	160#						
1/2"	52	22	195	13.9	15.5	21.3	82	14	9.7	145	42
3/4"	63	25	250	11.8	15.5	26.7	105	18	9.7	155	50
1"	71	25	250	24.3	20.7	33.4	115	18	9.7	180	50
1-1/2"	96	32	300	38.1	33.9	48.3	140	20	12	225	72
2"	121.5	42	340	49.2	42.8	60.3	180	24	15	280	72

NAME	3WAY-3000PSI ball valve	DWG.	JungChuna	DATE	May.8.2008
TYPE	J-Flow Controls			DATE	
				DWG. NO.	616-050-F01-1A